

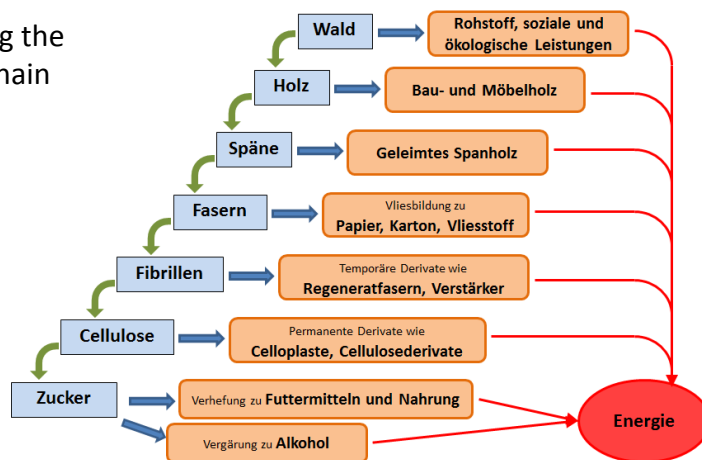
Energetic products & services from biomass: Biomethane, Electricity and Heat

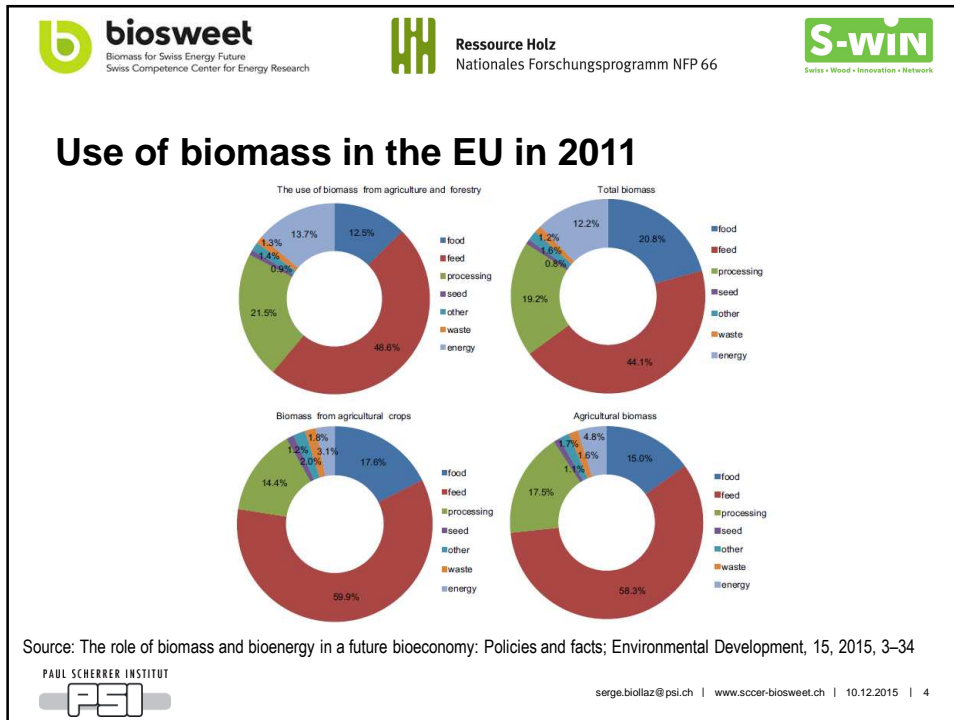
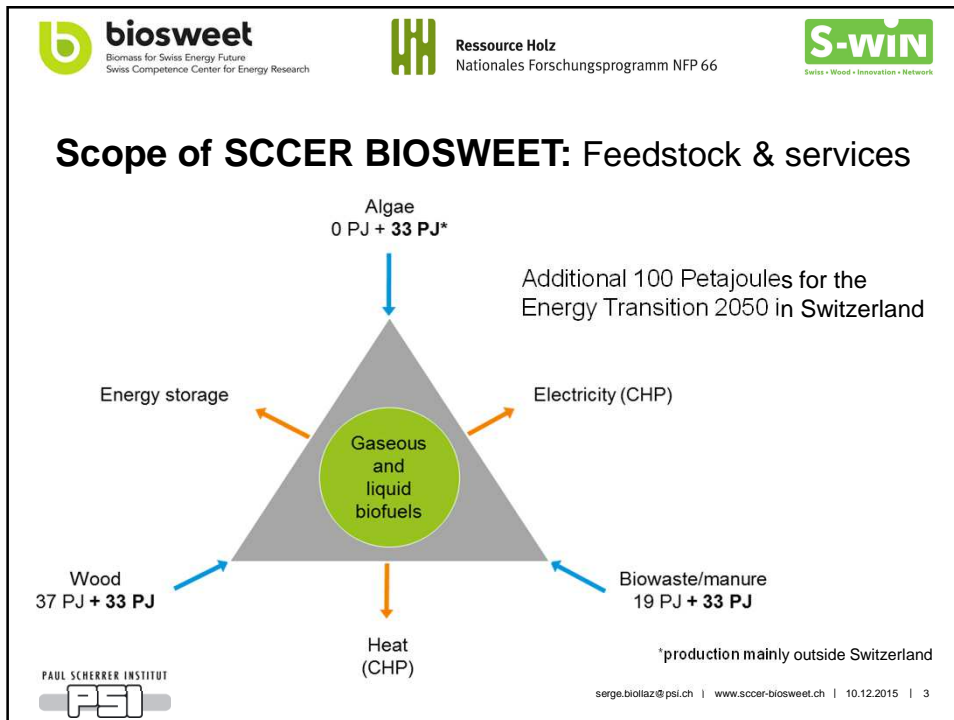
DP „Novel way in the bio-refining of wood“, 10.12.2015, Bern

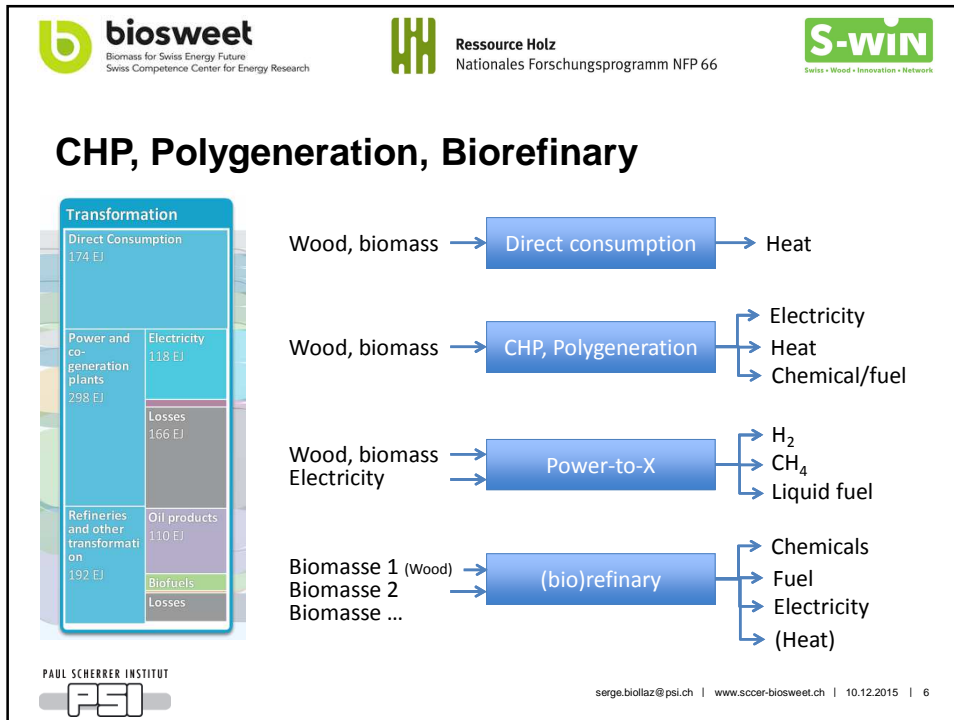
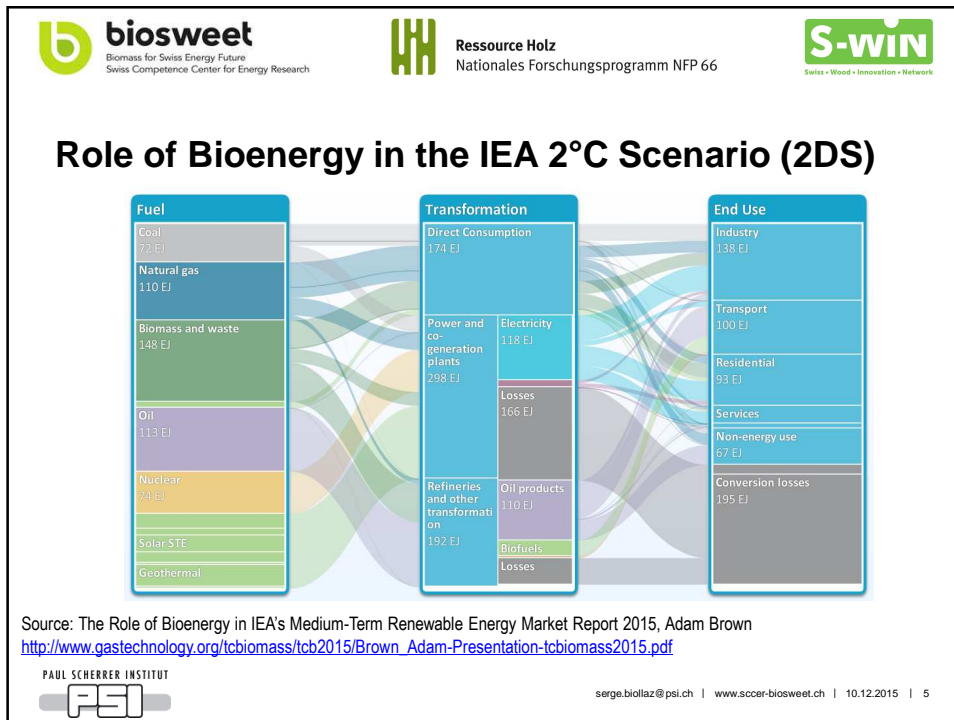


The Swiss Wood Innovation Network „S-WIN“

Activities along the
whole value chain
from wood to
“services”







biosweet
Biomass for Swiss Energy Future
Swiss Competence Center for Energy Research

WH
Ressource Holz
Nationales Forschungsprogramm NFP 66

S-WIN
Swiss • Wood • Innovation • Network

Selected technical building blocks

H₂-Gasification for liquid fuels

Revogas FICFB gasifier in Burgeis, IT
2 MW_{th}, 0.5 MW_{el}, 500 kg/h

Waste wood

Gasification for CHP or biomethane

Gasoline, Jet and Diesel Range
Hydrocarbon Fuels / Blend Stocks

Torrefaction

PAUL SCHERRER INSTITUT
PSI

serge.biollaz@psi.ch | www.sccer-biosweet.ch | 10.12.2015 | 7

biosweet
Biomass for Swiss Energy Future
Swiss Competence Center for Energy Research

WH
Ressource Holz
Nationales Forschungsprogramm NFP 66

S-WIN
Swiss • Wood • Innovation • Network

Some final thoughts

- Think about the value chain:
Feedstock production to (energy) “service”
- Think about the appropriate scale
- Think about the “business model”
 - Feedstock oriented
 - Energy service oriented
 - Knowledge oriented
- Develop successful project with feedstock owners and owner of existing infrastructure

PAUL SCHERRER INSTITUT
PSI

serge.biollaz@psi.ch | www.sccer-biosweet.ch | 10.12.2015 | 8